



BIOMAR
NORTH SHORE ROAD
GRANGEMOUTH

DATE: 14th February 2025

CATCH TRAY ANALYSIS & TREND

Activity levels Indicator

LOW 0-20

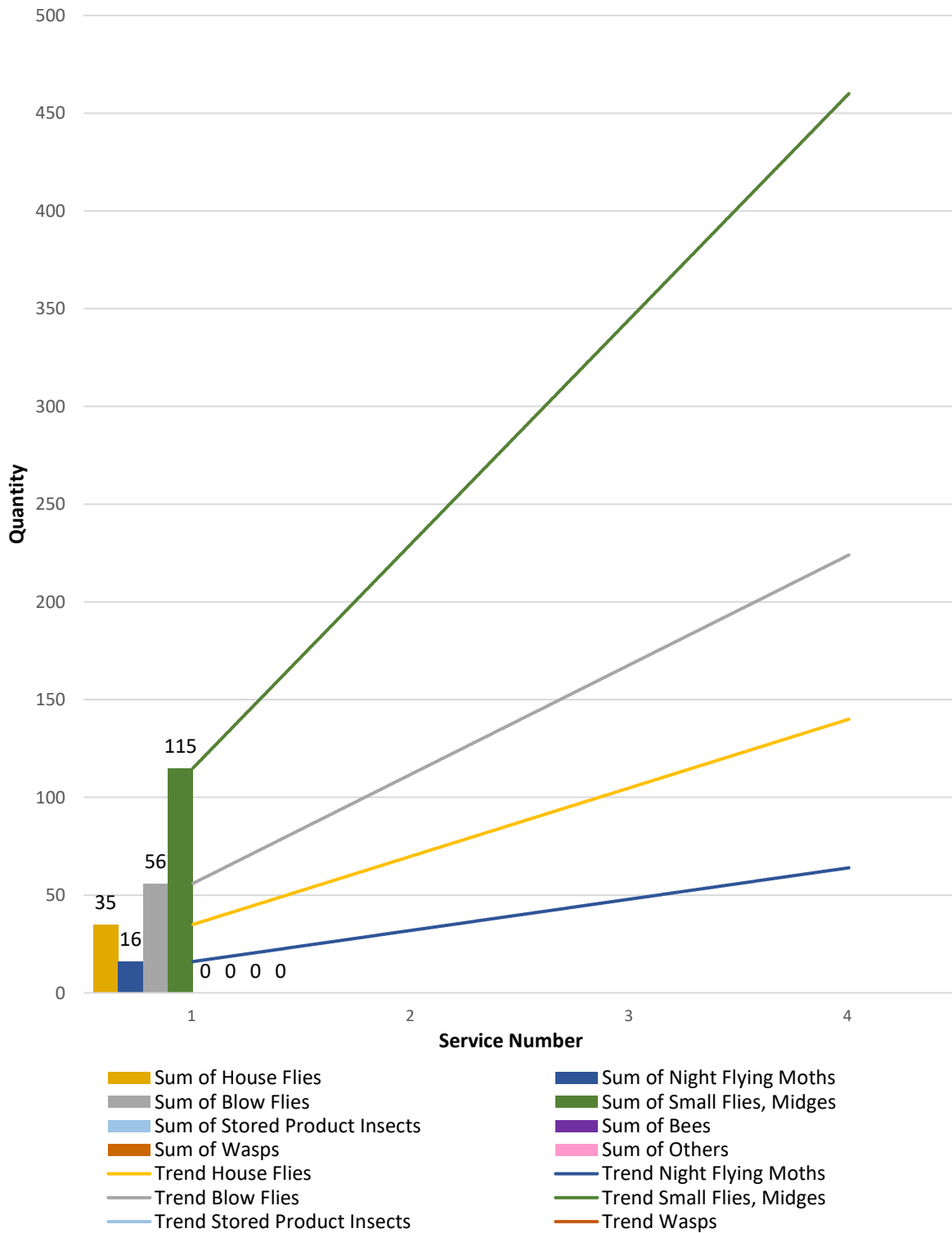
MEDIUM 21-50

HIGH 51+

		Bombus (bombus)	Vespula vulgaris	Calliphora vicina	Musca domestica	Noctuidae	Mycetophilidae Phoridae Sphaeroceridae		
Tray	Service	Bees	Wasps	Blow Flies	House Flies	Night Flying Moths	Small Flies, Midges	Stored Product Insects	Others
1	1	0	0	0	0	0	0	0	0
	2								
	3								
	4								
2	1	0	0	0	0	0	0	0	0
	2								
	3								
	4								
3	1	0	0	0	0	0	6	0	0
	2								
	3								
	4								
4	1	0	0	0	0	0	0	0	0
	2								
	3								
	4								
5	1								
	2								
	3								
	4								
6	1	0	0	17	8	2	6	0	0
	2								
	3								
	4								
7	1	0	0	2	3	2	13	0	0
	2								
	3								
	4								
8	1	0	0	12	8	3	15	0	0
	2								
	3								
	4								
9	1	0	0	0	0	0	0	0	0
	2								
	3								
	4								
10	1	0	0	3	4	3	18	0	0
	2								
	3								
	4								
11	1	0	0	0	0	0	0	0	0
	2								
	3								
	4								
12	1	0	0	0	0	0	0	0	0
	2								
	3								
	4								
13	1	0	0	0	0	0	0	0	0
	2								
	3								
	4								

14	1	0	0	0	0	0	0	0	0
	2								
	3								
	4								
15	1	0	0	0	0	0	0	0	0
	2								
	3								
	4								
16	1	0	0	8	2	0	8	0	0
	2								
	3								
	4								
17	1	0	0	3	2	2	8	0	0
	2								
	3								
	4								
18	1	0	0	2	3	1	12	0	0
	2								
	3								
	4								
19	1	0	0	2	0	1	10	0	0
	2								
	3								
	4								
20	1	0	0	4	0	0	8	0	0
	2								
	3								
	4								
21	1	0	0	3	5	2	11	0	0
	2								
	3								
	4								

FLYING INSECT TREND ANALYSIS FOR ENTIRE SITE



Please note

- The bars on the Trend Analysis graph indicate the total sum of separate category flying insects for all the catch trays in each service.
- The trend line on the trend Analysis graph indicates the current trend for each separate category upto the service complete. This is likely to change as more service data is analysed.

Tray	Recommendations

